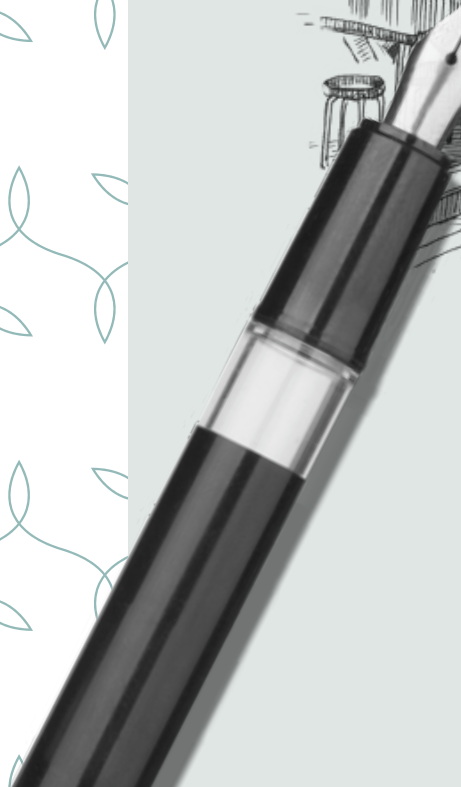


The Enclave • Holland





www.新加坡房地产.com



A NEIGHBOURHOOD
WITH SO MUCH TO LOVE



There's never a dull moment when your
home is in the heart of Holland Village.

ENTER A WORLD
OF LIFESTYLE AND
ENTERTAINMENT
PLEASURES



From everyday dining to having great night outs with your friends, take your pick from a variety of fine restaurants, cafés, bars and pubs in Holland Village, Chip Bee Gardens and Dempsey Hill. At The Enclave • Holland,

Beautify yourself at ONLY Aesthetics:
The Kuching Nail Spa



Dance the night away
at Wala Wala Café Bar



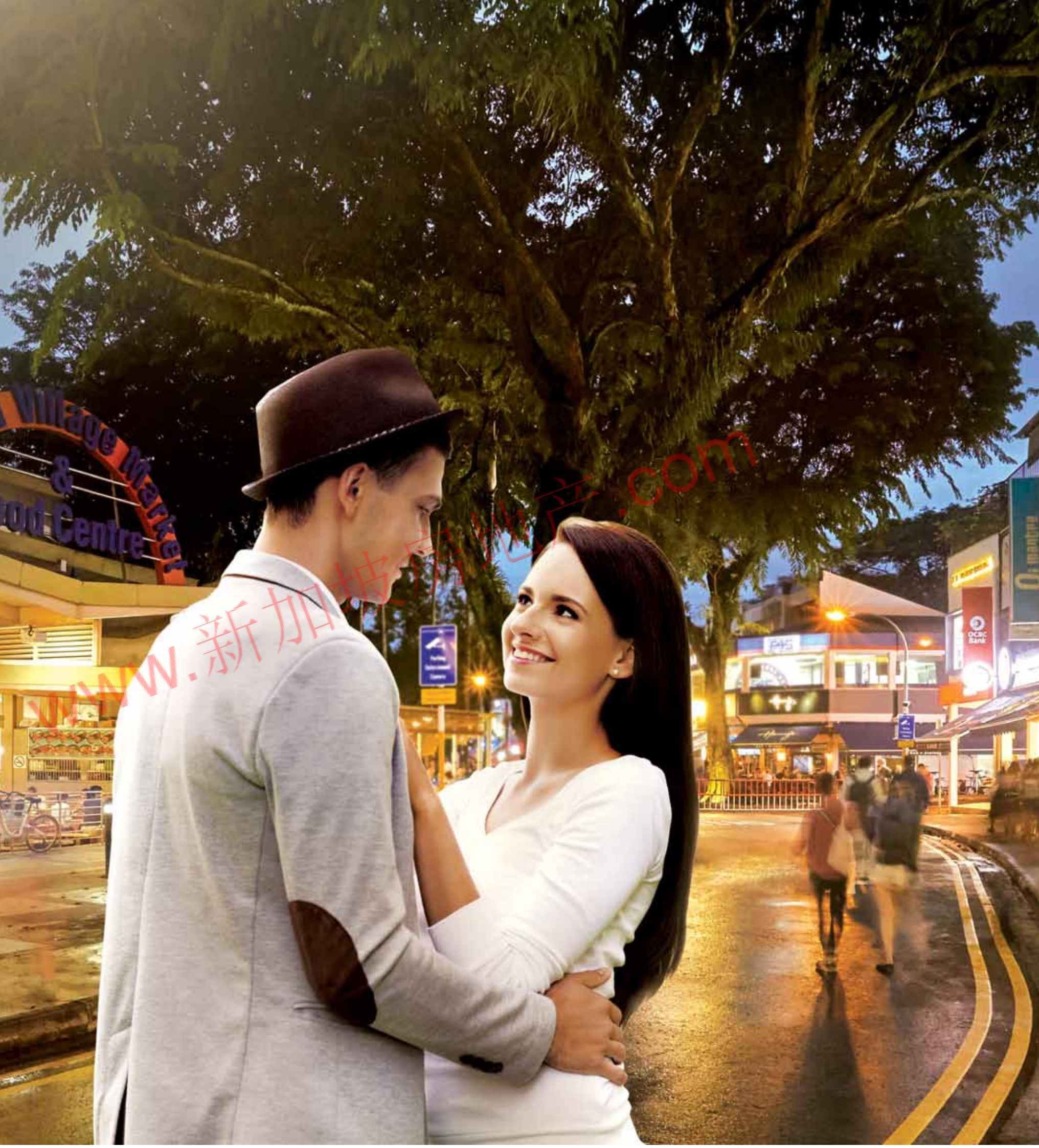
Chill out at The Coffee Bean
& Tea Leaf, Baker & Cook



Shop away at Holland Village
Shopping Mall



Wine & Dine at La Nonna,
Crust, Crystal Jade



HOLLAND VILLAGE WITH MORE TO LOVE

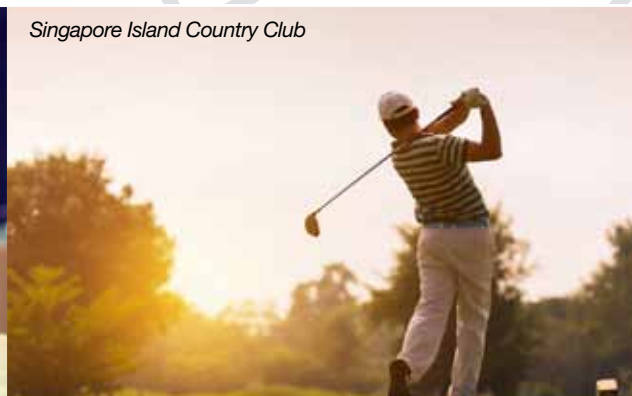


A new mixed-use development and an impressive 5-storey medical centre and shopping mall will be added. Besides state-of-the-art medical facilities, Raffles Holland V will feature a range of retail and F&B stores. Together with an exciting re-development of the Windmill building, you can look forward to an increased vibrancy of Holland Village.



A VANTAGE POINT TO WHERE YOU NEED TO BE

It doesn't matter if you are driving the kids to school, going to work or heading out for some retail therapy. The Enclave • Holland's prime, central location ensures that you get all you need out of your daily life with the utmost convenience.



WELCOME TO A HOME DESIGNED BY
AN AWARD-WINNING FIRM

With an array of prestigious awards under its belt,
Park + Associates sculpts The Enclave • Holland's
sleek architectural form, embodying all the design
elements resonant with the firm's design beliefs.



International Architecture Award 2017
Sports and Recreation
Singapore Island Country Club

BCA Construction Excellence Awards 2017
Residential Buildings
1919

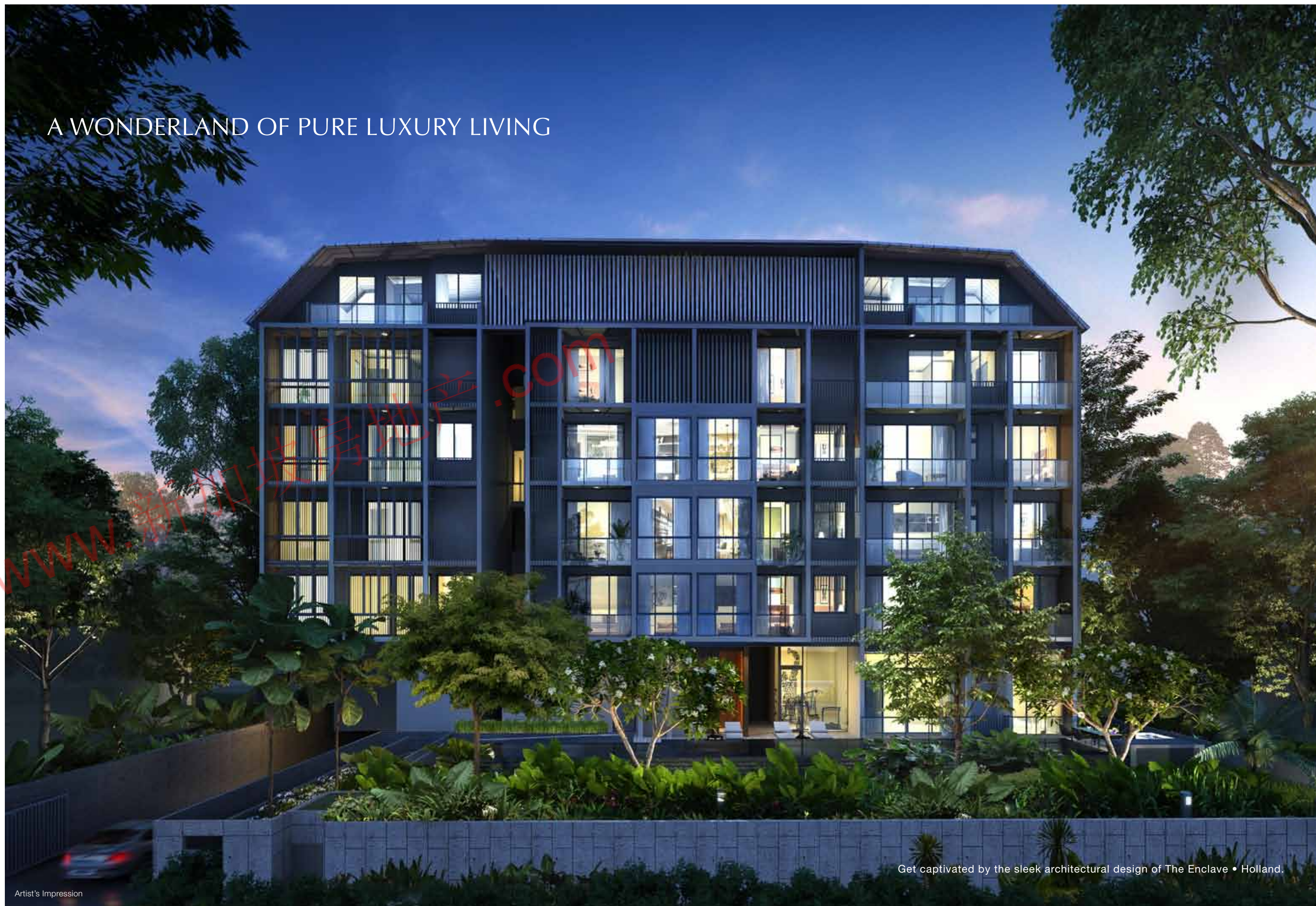
Architizer A+ Awards 2017
Popular Choice | Winner
House 24

Interior Design's Best of Year 2017
Education - Large Primary / Secondary | Winner
Nanyang Girls' High School

President's Design Award 2015
Design of the Year
Park + Associates Office

SIA Architectural Design Awards 2015
Residential Projects | Honourable Mention
Greja House

A WONDERLAND OF PURE LUXURY LIVING



Get captivated by the sleek architectural design of The Enclave • Holland.

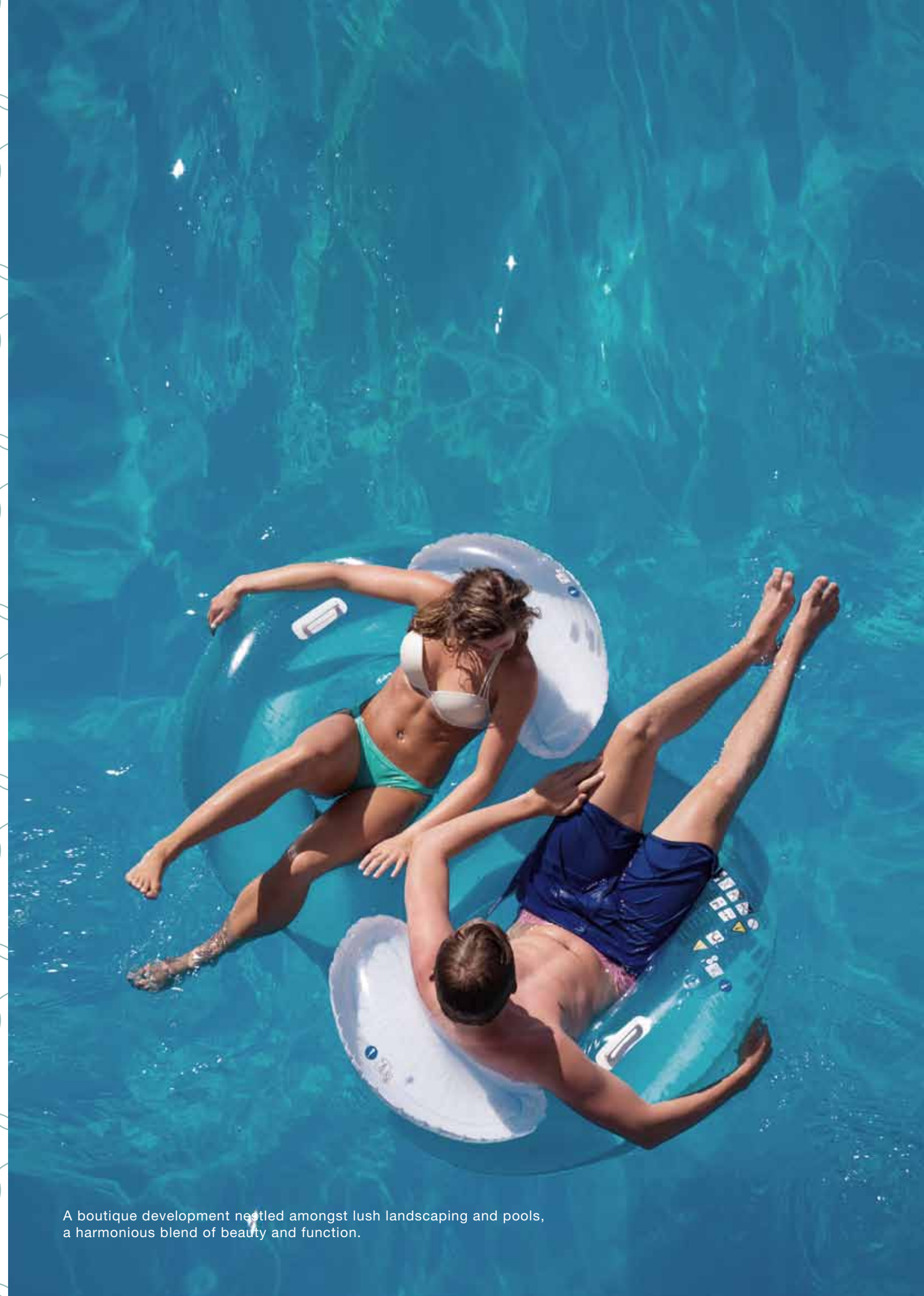


www.新加坡房地产.com

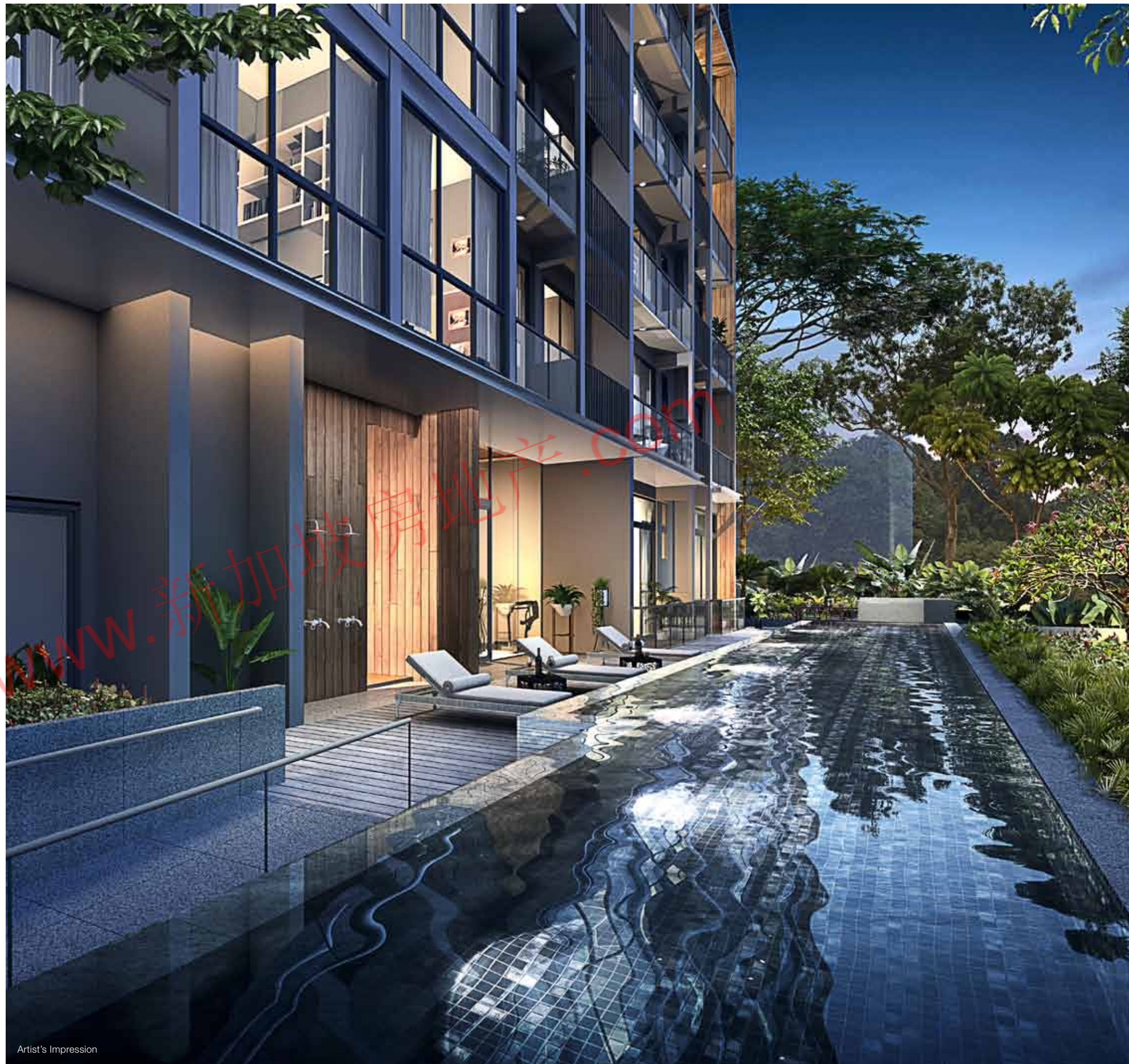


DIP INTO A VISTA OF ELEGANCE
IN HARMONY

www.新加坡房地产.com



A boutique development nestled amongst lush landscaping and pools,
a harmonious blend of beauty and function.



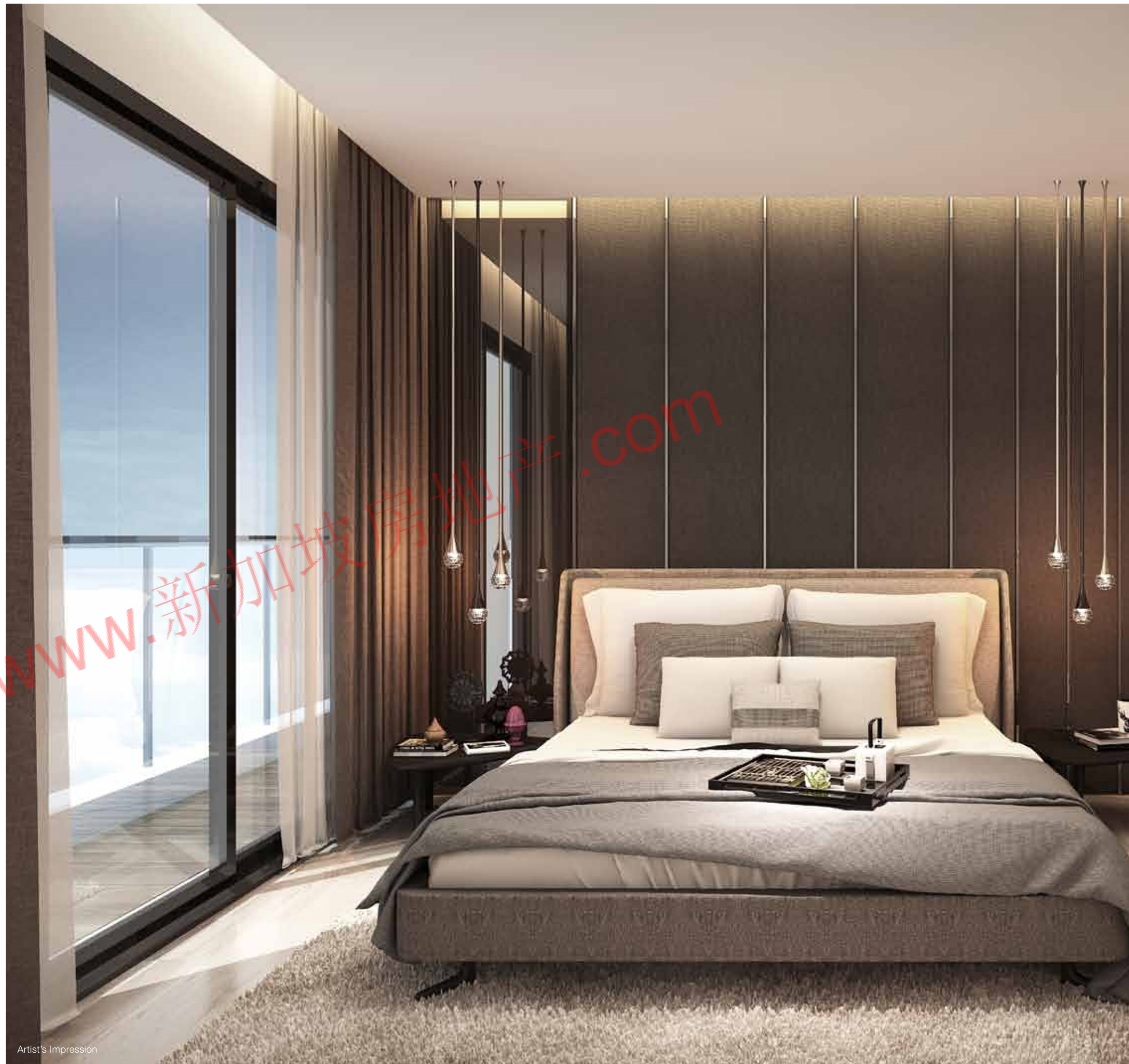
Artist's Impression

WELCOME TO YOUR POOLSIDE PARADISE



Artist's Impression

Whether it is relaxing by the pool or working
up a sweat at the indoor gym, there is plenty
to keep you occupied when you're living at The
Enclave • Holland.



A LIFE OF
SPLENDOUR.
START DREAMING.



Artist's Impression

Wake up each morning in a stylishly modern
bedroom that promises exquisite attention
to detail at every corner. And when it's time for
bed, slip into peaceful slumber with dreams of
all the finest things life has to offer.

Artist's Impression



Artist's Impression

A CLASSY HOME TO EASE RIGHT INTO

Take some time to appreciate the smooth lines while you luxuriate
in the cosiness of your abode. It's time to live the life you desire,
and it starts right here.



Site plan



Legend

- 1

Basement Car Park Entrance
- 2

Staircase to Pool Deck
- 3

Swimming Pool
- 4

Pool Lounge Area
- 5

Outdoor Pool Function Area
- 6

Gym (1st Storey)
- 7

Shower Point (1st Storey)
- 8

Handicapped Toilet (1st Storey)
- 9

Consumer Switch Room (1st Storey)
- 10

MDF Room (1st Storey)
- 11

Water Tank / Pump (1st Storey)
- 12

Bin Point
- 13

Generator Set (1st Storey)
- 14

Pedestrian Entrance
- 15

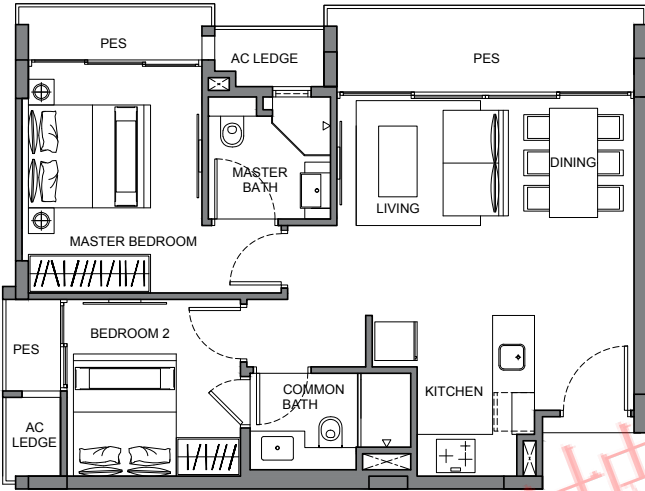
Communal Planter (1st Storey)

Unit Distribution Chart

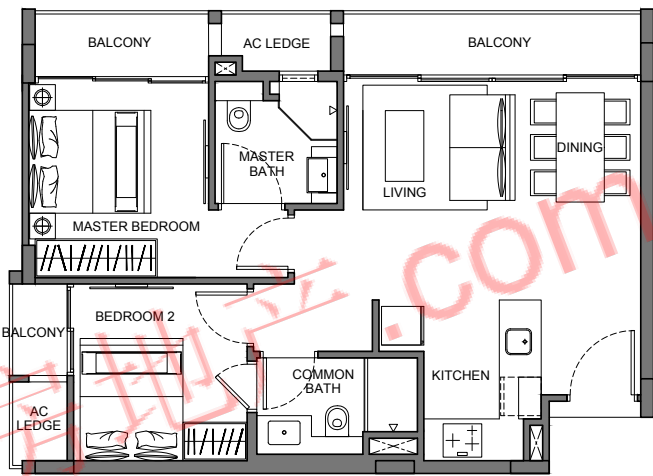
Unit no	01	02	03	04	05	06	07
Attic							
5th Storey		PH2	PH3		B6	PH1	
4th Storey	D4				B2	A2	D2
3rd Storey	D3	E1	E2	C3	B2	A2	D1
2nd Storey	D3	B5	B4	C2	B2	A2	D1
1st Storey			B3	C1	B1	A1	

-
- 1 BEDROOM APARTMENT
-
- 2 BEDROOM APARTMENT
-
- 3 BEDROOM APARTMENT
-
- 4 BEDROOM APARTMENT

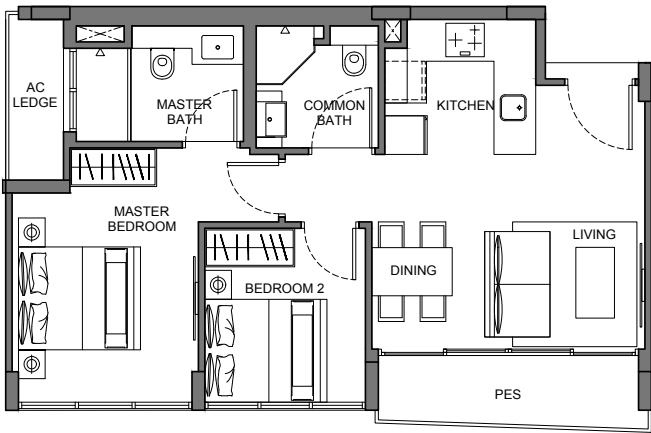
2-Bedroom



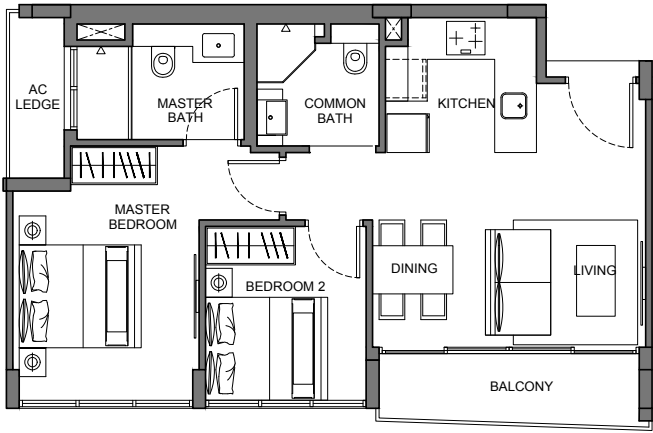
TYPE A1
2-Bedroom
70 sq m / 753 sq ft
#01-06



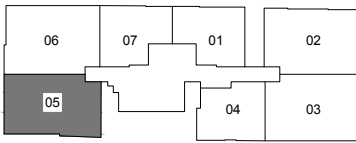
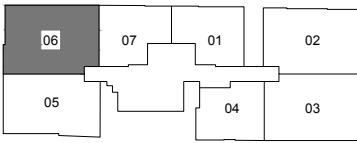
TYPE A2
2-Bedroom
67 sq m / 721 sq ft
#02-06, #03-06 & #04-06



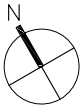
TYPE B1
2-Bedroom
61 sq m / 657 sq ft
#01-05



TYPE B2
2-Bedroom
61 sq m / 657 sq ft
#02-05, #03-05 & #04-05

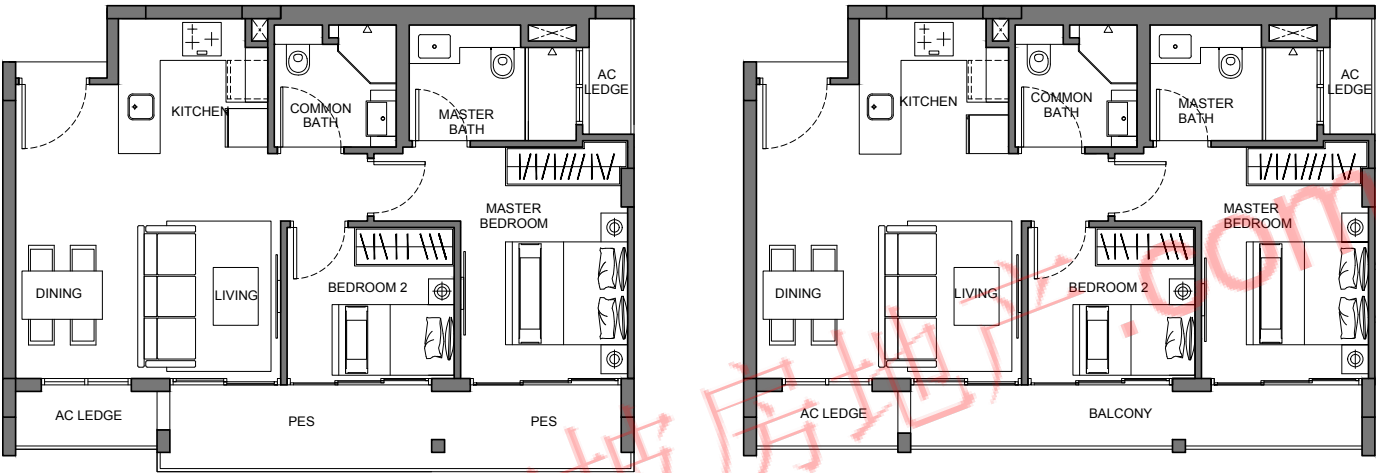


Floor areas are inclusive of PES, balconies, A/C ledges and voids. Floor area are approximate and subject to final survey. The plans are subject to changes as required or approved by relevant authorities. The balconies shall not be enclosed unless with approved balcony screens.



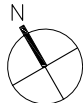
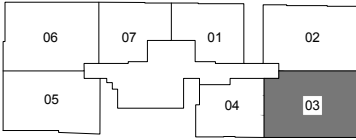
Floor areas are inclusive of PES, balconies, A/C ledges and voids. Floor area are approximate and subject to final survey. The plans are subject to changes as required or approved by relevant authorities. The balconies shall not be enclosed unless with approved balcony screens.

2-Bedroom



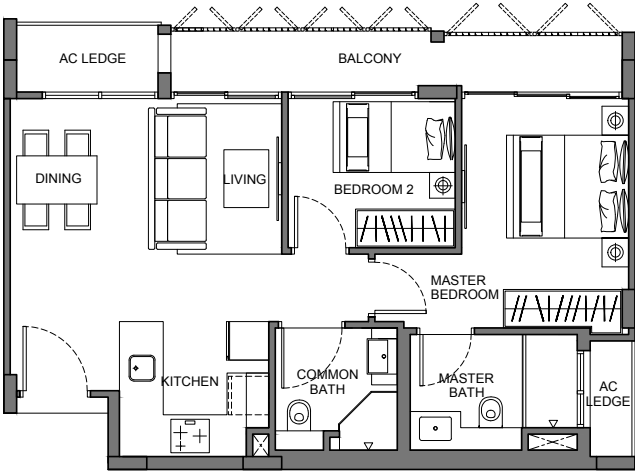
TYPE B3
2-Bedroom
67 sq m / 721 sq ft
#01-03

TYPE B4
2-Bedroom
64 sq m / 689 sq ft
#02-03

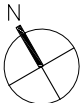
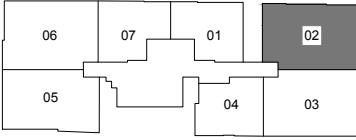


Floor areas are inclusive of PES, balconies, A/C ledges and voids. Floor area are approximate and subject to final survey. The plans are subject to changes as required or approved by relevant authorities. The balconies shall not be enclosed unless with approved balcony screens.

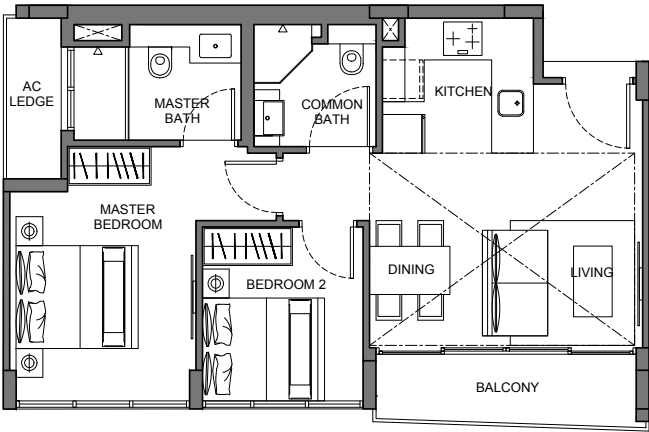
2-Bedroom



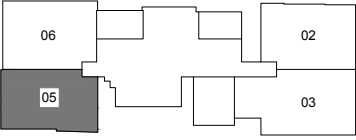
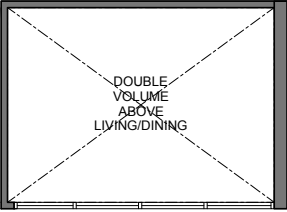
TYPE B5
2-Bedroom
64 sq m / 689 sq ft
#02-02



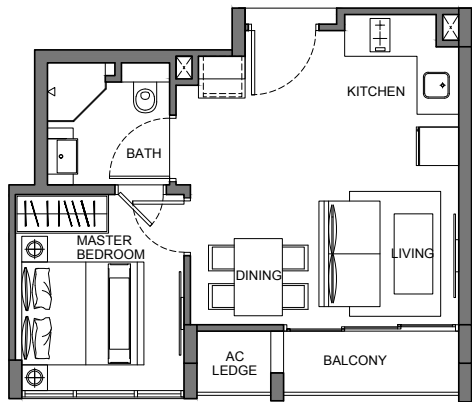
Floor areas are inclusive of PES, balconies, A/C ledges and voids. Floor area are approximate and subject to final survey. The plans are subject to changes as required or approved by relevant authorities. The balconies shall not be enclosed unless with approved balcony screens.



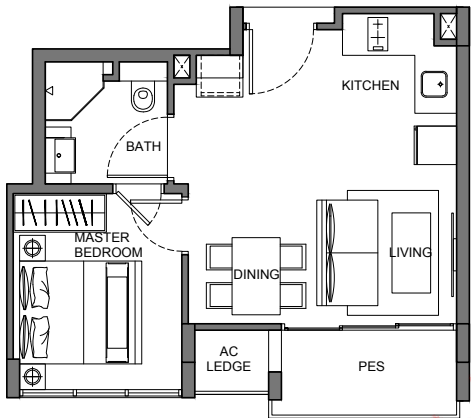
TYPE B6
2-Bedroom
74 sq m / 797 sq ft
#05-05



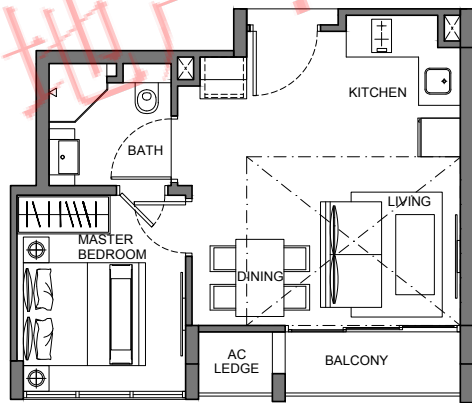
1-Bedroom



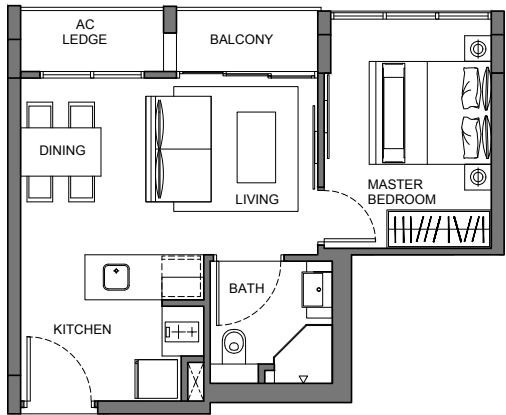
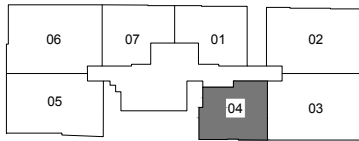
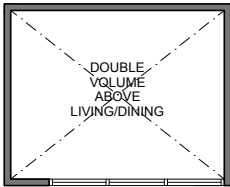
TYPE C2
1-Bedroom
38 sq m / 409 sq ft
#02-04



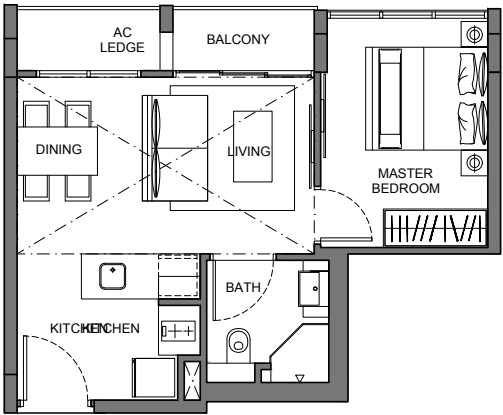
TYPE C1
1-Bedroom
39 sq m / 420 sq ft
#01-04



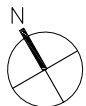
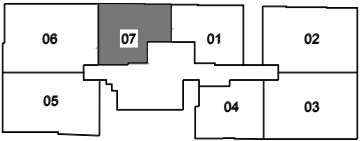
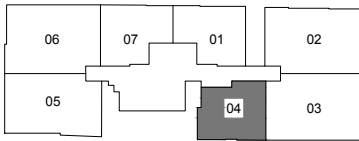
TYPE C3
1-Bedroom
47 sq m / 506 sq ft
#03-04



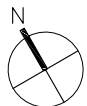
TYPE D1
1-Bedroom
40 sq m / 431 sq ft
#02-07 & #03-07



TYPE D2
1-Bedroom
53 sq m / 570 sq ft
#04-07



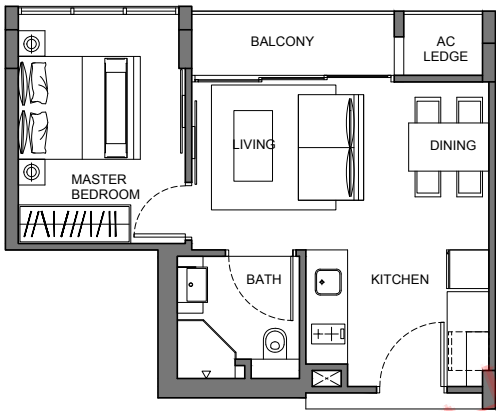
Floor areas are inclusive of PES, balconies, A/C ledges and voids. Floor area are approximate and subject to final survey. The plans are subject to changes as required or approved by relevant authorities. The balconies shall not be enclosed unless with approved balcony screens.



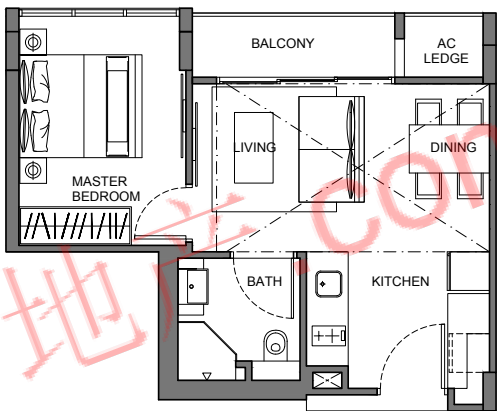
Floor areas are inclusive of PES, balconies, A/C ledges and voids. Floor area are approximate and subject to final survey. The plans are subject to changes as required or approved by relevant authorities. The balconies shall not be enclosed unless with approved balcony screens.

1-Bedroom

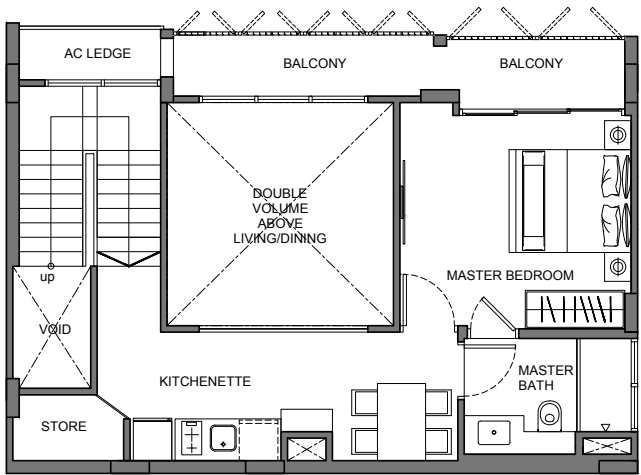
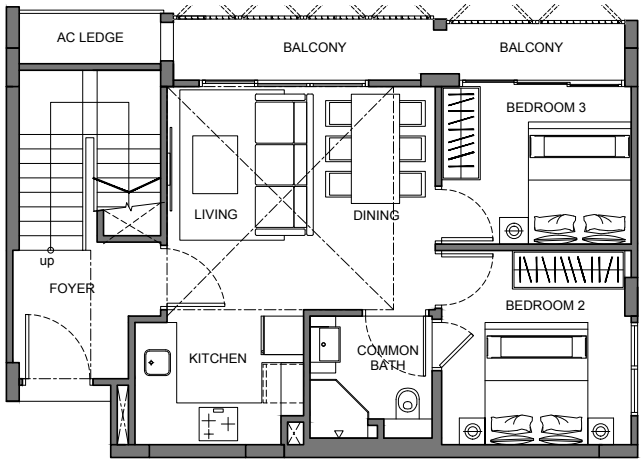
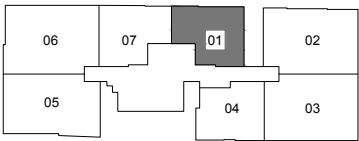
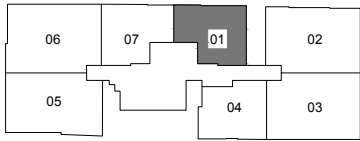
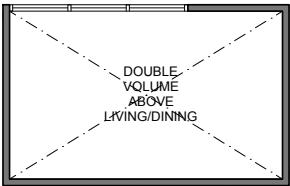
3-Bedroom



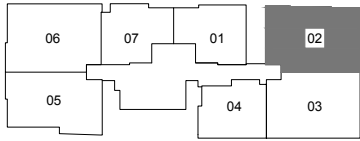
TYPE D3
1-Bedroom
39 sq m / 420 sq ft
#02-01 & #03-01



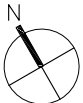
TYPE D4
2-Bedroom
51 sq m / 549 sq ft
#04-01



TYPE E1
3-Bedroom
129 sq m / 1389 sq ft
#03-02



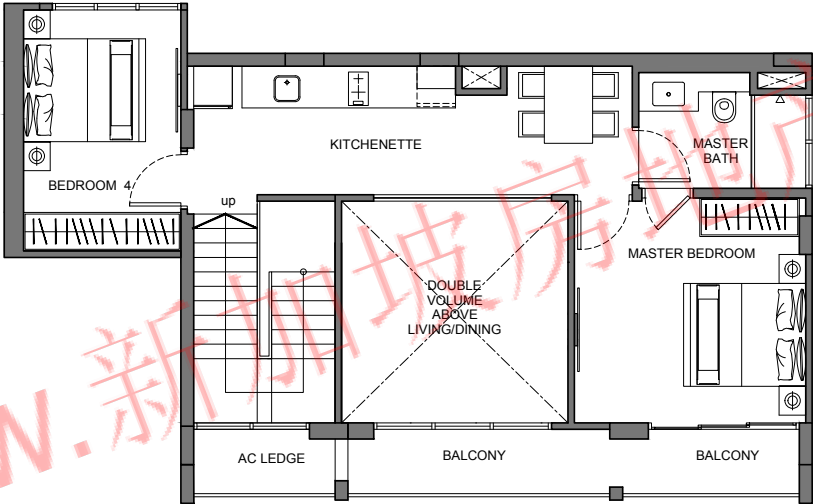
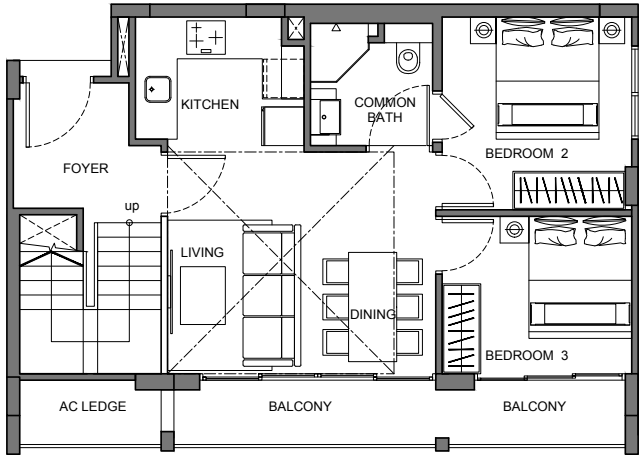
Floor areas are inclusive of PES, balconies, A/C ledges and voids. Floor area are approximate and subject to final survey. The plans are subject to changes as required or approved by relevant authorities. The balconies shall not be enclosed unless with approved balcony screens.



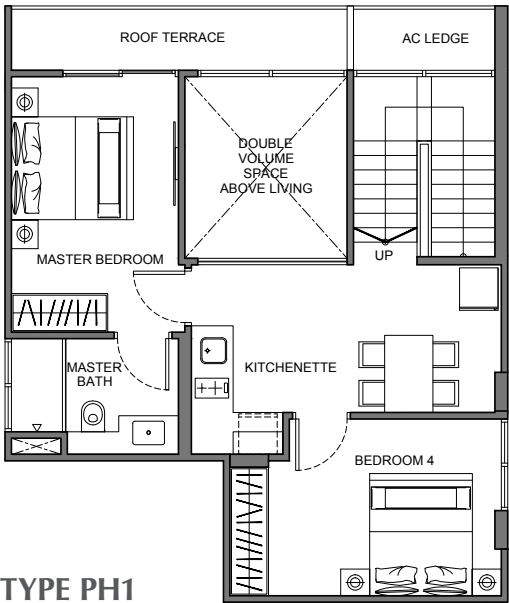
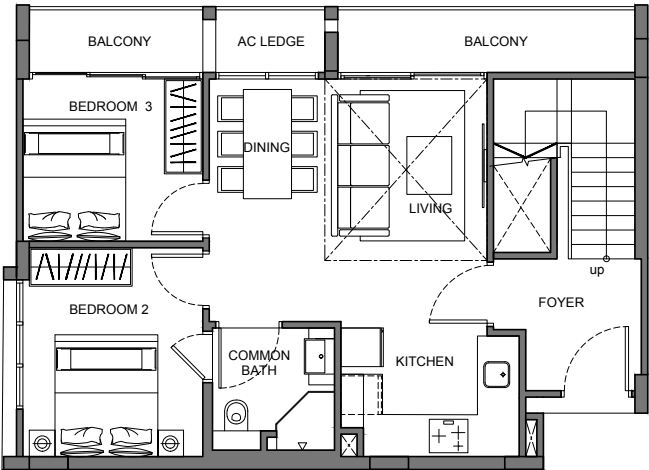
Floor areas are inclusive of PES, balconies, A/C ledges and voids. Floor area are approximate and subject to final survey. The plans are subject to changes as required or approved by relevant authorities. The balconies shall not be enclosed unless with approved balcony screens.

4-Bedroom

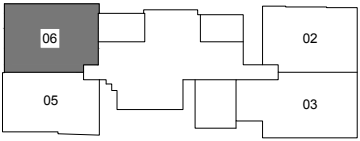
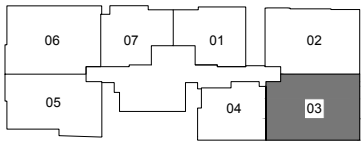
Penthouse



TYPE E2
4-Bedroom
140 sq m / 1507 sq ft
#03-03



TYPE PH1
4-Bedroom
131 sq m / 1410 sq ft
#05-06



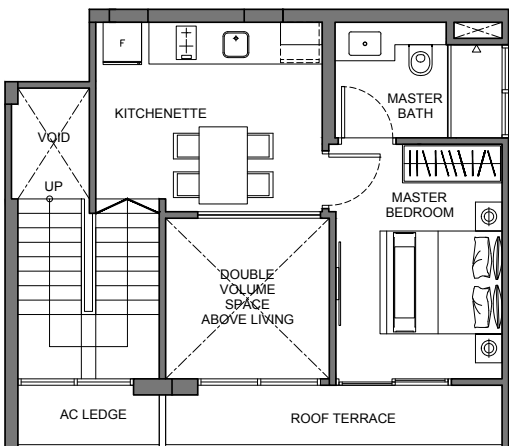
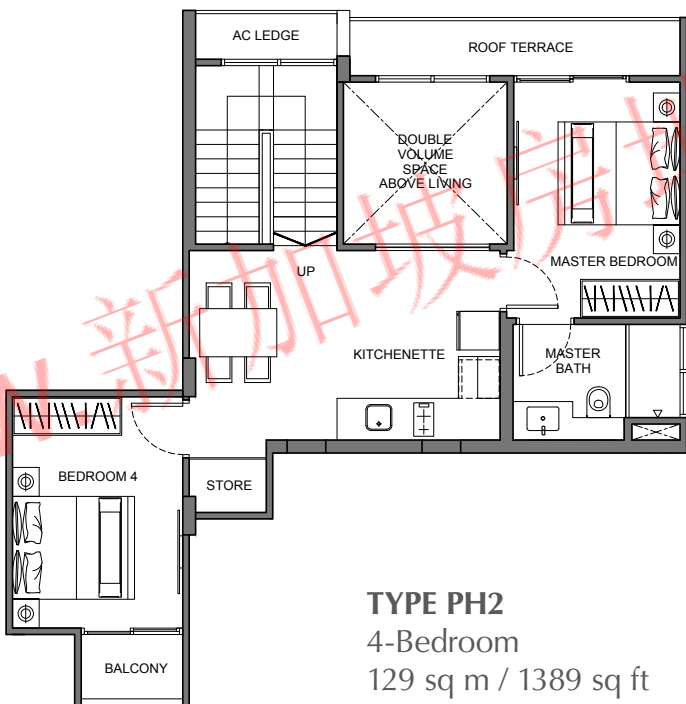
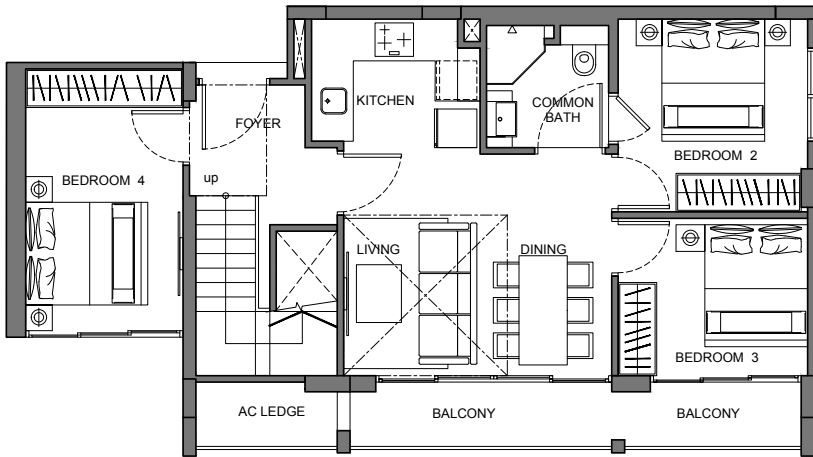
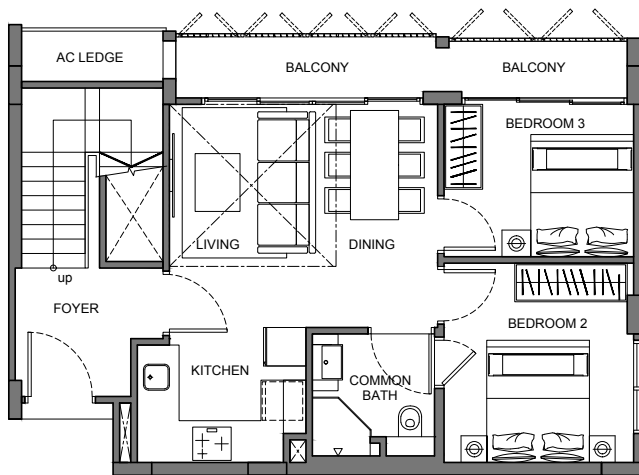
Floor areas are inclusive of PES, balconies, A/C ledges and voids. Floor area are approximate and subject to final survey. The plans are subject to changes as required or approved by relevant authorities. The balconies shall not be enclosed unless with approved balcony screens.



Floor areas are inclusive of PES, balconies, A/C ledges and voids. Floor area are approximate and subject to final survey. The plans are subject to changes as required or approved by relevant authorities. The balconies shall not be enclosed unless with approved balcony screens.

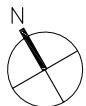
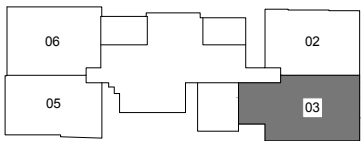
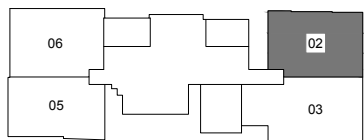
Penthouse

Penthouse

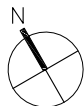


TYPE PH2
4-Bedroom
129 sq m / 1389 sq ft
#05-02

TYPE PH3
4-Bedroom
126 sq m / 1356 sq ft
#05-03



Floor areas are inclusive of PES, balconies, A/C ledges and voids. Floor area are approximate and subject to final survey. The plans are subject to changes as required or approved by relevant authorities. The balconies shall not be enclosed unless with approved balcony screens.



Floor areas are inclusive of PES, balconies, A/C ledges and voids. Floor area are approximate and subject to final survey. The plans are subject to changes as required or approved by relevant authorities. The balconies shall not be enclosed unless with approved balcony screens.

DEVELOPER



Developer: 369 Development Pte Ltd (201502962D) • Developer's Licence No.: C1237 • Tenure of Land: Freehold • Location Lot No.: MK04 On Lots 01093W, 01094V at 131 Holland Road • Building Plan Approval No.: A1553-00102-2015-BP02 (25/07/2017) & A1553-00102-2015-BP02 (13/11/2017) • Expected Date of TOP: 31 January 2020 • Expected Date of Legal Completion: 31 January 2021 • Encumbrances: Mortgage in favour of United Overseas Bank Limited

While every reasonable care has been taken in preparing this brochure and in constructing models and showflat, the Developer and the Marketing Agent(s) cannot be held responsible for any inaccuracies or omissions. Visual representations, models, showflat displays and illustrations, photographs, art renderings and other graphic representations and references are intended to portray only artistic impressions of the development and cannot be regarded as representations of fact. Floor areas are approximate measurements and are subject to final survey. The property is subject to inspection by the relevant authorities to comply with current codes of practice.

All information, specifications, renderings, visual representations and plans are current at the time of publication and are subject to change as may be required by us and/or the competent authorities and shall not form part of any offer or contract or constitute any warranty by us and shall not be regarded as statements or representations of fact. All areas are approximate measurements only and subject to final survey. The Sale and Purchase Agreement shall form the entire agreement between us the Developer and the Purchaser and shall supersede all statements, representations or promises made prior to the signing of the Sale and Purchase Agreement and shall in no way be modified by any statements, representations or promises made by us or the Marketing Agent(s).

www.新加坡房地产.com